

Salvador Dalí

*Visions of eternity*

Salvador Dalí was always much more than one of Surrealism's leading figures. A painter, a designer, an engraver and a sculptor as well as a writer and a set designer, Dalí is one of the undisputed geniuses of the twentieth century art world. In the span between his first painting, executed in 1910 at the age of six and his last work in 1983, the Spanish artist created an universe, where dreamlike, eccentric and symbolic themes intertwine seamlessly.

**A virtuoso gifted with dazzling skills and technique, Dalí was a masterly engraver who could produce equally outstanding work in drypoint, etching, woodcut and lithography and was able to illustrate superbly a broad range of texts from different eras.**

---

The pièce de résistance of the exhibition presented here are the illustrations of Dante's *The Divine Comedy*. Commissioned in 1957 and completed in 1968, this is a grandiose depiction of the poem. The amount of work needed to produce these lithographies is truly staggering: every illustration requires as many as 35 colours and a total of 3,000 woodcuts is employed. Dalí's mastery of drypoint gives birth to three further masterpieces included here: *Faust* (1969), a vivid

representation of Goethe's text, the delicate and dreamlike *Japanese Fairy Tales* (1976) and *Tristan and Isolde* (1969), a myth close to the master's art and the subject of one of his most famous paintings for the *Bacchanale ballet* in 1944.

The exhibition includes also the spectacular etchings illustrating the gothic novel *The Castle of Otranto*. Lastly, it presents the two series commissioned by the Israeli

government. In *The Twelve Tribes of Israel* (1968) Dalí portrays with acumen the story of the roots of the Jewish people. In *Aliyah* (1968) the artist tells the tale of the rebirth of the state of Israel with brightly, boldly coloured lithographies.

---

*An extraordinary selection of more than 200 works:*

*Divina Commedia*

1960

100 works  
woodcut

*Le Chateau d'Otrante*

1964

12 works  
etching

*Aliyah*

1968

25 works  
litography

*Faust*

1969

21 works  
drypoint

*Tristan et Iseut*

1969

21 works  
drypoint

*The Twelve Tribes of Israel*

1973

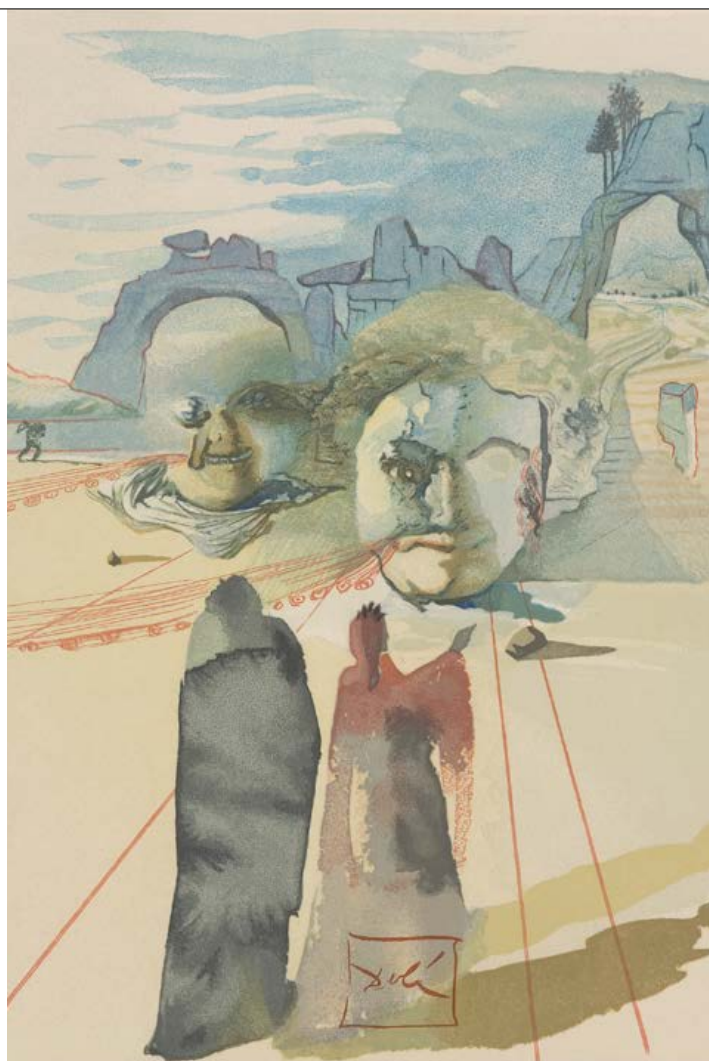
13 works  
etching, aquatint,  
drypoint and pochoir

*Japanese Fairy Tales*

1966

10 works  
drypoint and pochoir

## *Divina Commedia*, 100 works



**SALVADOR DALÍ**

*Divina Commedia*

1960, 100 works, woodcut

## *Le Chateau d'Otrante, 12 works*



**SALVADOR DALÍ**

*Le Chateau d'Otrante*

1964, 12 works, etching

# Aliyah, 25 works



**SALVADOR DALÍ**

*Aliyah*

1968, 25 works, lithography

# Faust, 21 works



**SALVADOR DALÍ**  
*Faust*  
1969, 21 works, drypoint

## *Tristan et Iseut*, 21 works



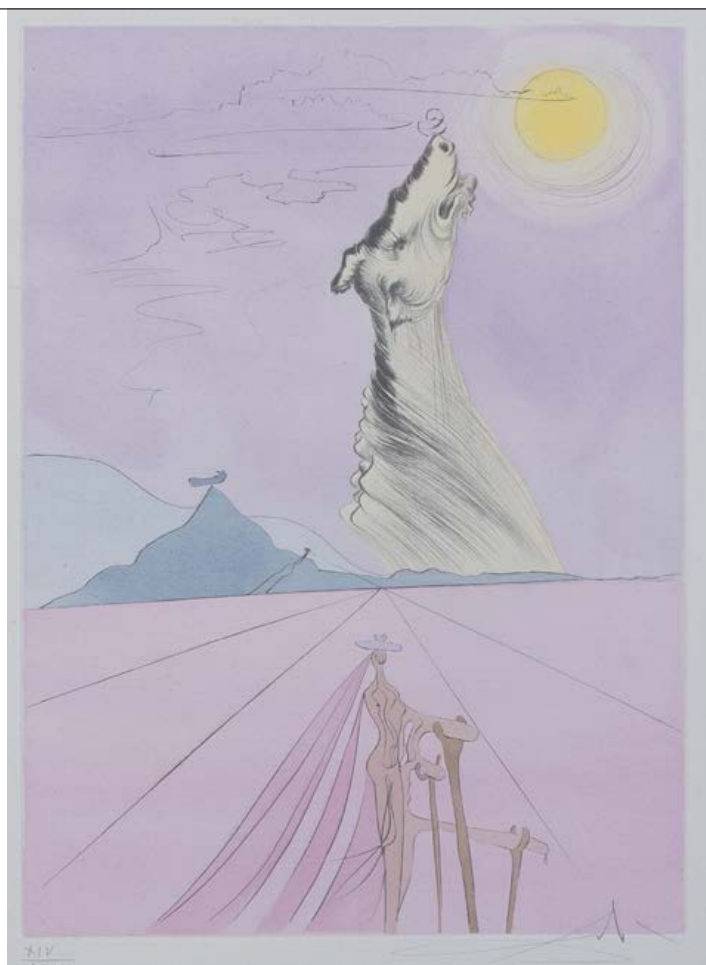
**SALVADOR DALÍ**

*Tristan et Iseut*

1969, 21 works, drypoint



## *The Twelve Tribes of Israel, 13 works*



---

**SALVADOR DALÍ**

*The Twelve Tribes of Israel*

1973, 13 works, etching, aquatint,  
drypoint and pochoir

---

## *Japanese Fairy Tales, 10 works*



**SALVADOR DALÍ**

*Japanese Fairy Tales*

1966, 10 works, drypoint and pochoir